

LOWRANCE®

HOOK² ICE TRANSDUCER

INSTALLATION GUIDE



For product manuals, technical specifications, certificates and declarations refer to the product website:

www.lowrance.com

CE

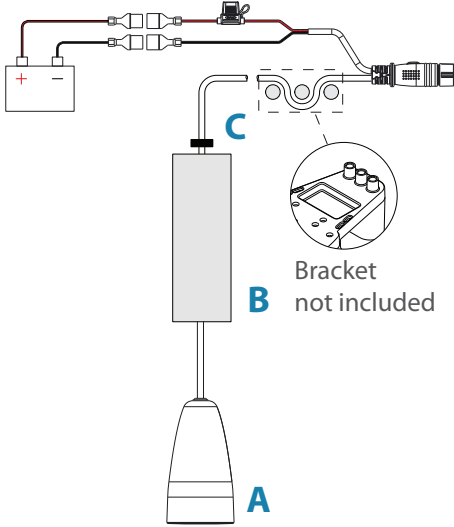


Technical specifications

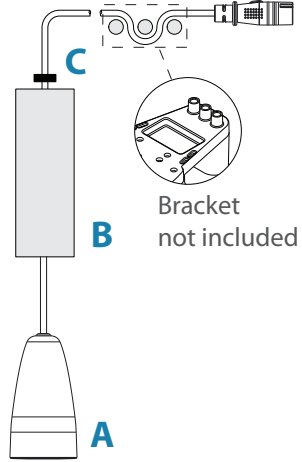
Weight - transducer for 4x units	0.25 kg (0.55 lbs)
Weight - transducer with 8 pin connector	0.23 kg (0.50 lbs)
Cable length	2.2 m (7.2 ft)
Frequency	200 kHz
Beam width (@ -3 dB)	17° @ 200 kHz
Max depth	152.4 m (500 ft)

HOOK² 4x Ice transducer

10.4 to 17.0 V DC
< 6.1 W (3 A fuse)



HOOK² Ice transducer



Parts

- A. Transducer
- B. Ice foam float
- C. Rubber grommet